

# Pro Stage Laser Show System

## User's Manual

*This manual contains important laser system safety and operation information. Read and understand all instructions prior to powering on laser unit the first time, to avoid laser eye injury and to avoid breaking the law. Keep this manual in a safe place for future reference.*

**V.8.0**

## **General Instructions**

### **Unpacking:**

Thank you for purchasing this product. Please read user guide for safety and operations information before using the product. Keep this manual for future reference. This product can create perfect light programs and effects since it has passed a series of strictly tests before delivery. Please check the attachments listed on the page after opening the carton. Immediately upon receiving a fixture, carefully unpack the box. Check the box contents to ensure that all parts are present and that they are in good condition. If any part appears damaged from shipping, or if the box shows signs of mishandling, notify the shipper immediately. In addition, retain the box and all the packing material for inspection. In any event, save the carton and all packing material because, in case that you have to return the fixture to the factory, you will have to do so in its original box, with its original packing.

What is included: 1\* Light, 1\*Power Cable, 1\*User Guide, 1\*TF card

Safety Notice: Please read the following notes carefully because they include important safety information about the installation, usage and maintenance of this product. It is important to read all these notes before starting to work with this product.

### **Laser Expected Lifespan**

Laser gradually decline in brightness over time. HEAT is the dominant factor that leads to the acceleration of this decline. Packaged in clusters, Laser exhibit higher operating temperatures than in ideal or singular optimum conditions. For this reason when all color Laser are used at their fullest intensity, life of the Laser is significantly reduced. It is estimated that a viable lifespan of 5,000 to 10,000 hours will be achieved under normal operational conditions. If improving on this lifespan expectancy is of a higher priority, place care in providing for lower operational temperatures. This may include climatic-environmental and the reduction of overall projection intensity.

Lasers can be hazardous and have unique safety considerations. Permanent eye injury and blindness is possible if lasers are used incorrectly. Pay close attention to each safety REMARK and WARNING statement in the user manual. Read all instructions careful.

### **Laser Safety Warnings**

Potential laser injury hazard exists with this product! Read these Instructions carefully, which include important information about installation, safe use and service!

#### **Caution:**

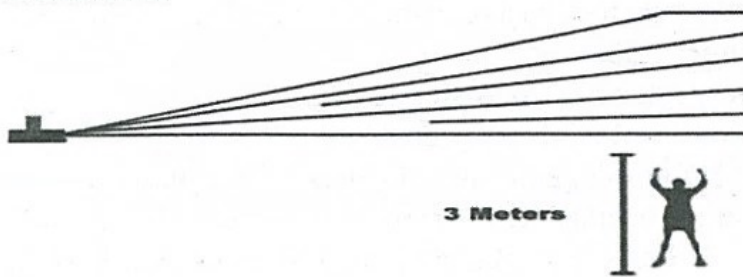
- \*Avoid direct eye contact with laser light. Never intentionally expose your eyes or others to direct laser radiation.
- \*This laser product can potentially cause instant eye injury or blindness if laser light directly strikes the eyes.
- \*It is illegal and dangerous to shine this laser into audience areas, where the audience or other personnel could get direct laser beams or bright reflections into their eyes.
- \*It is a US Federal offense to shine any laser at aircraft.

### **NON-INTERLOCKED HOUSING WARNING**

\*This unit contains high power laser devices internally. Do not open the laser housing, due to potential exposure to unsafe levels of laser radiation. The laser power levels accessible if the unit is opened can cause instant blindness, skin burns and fires.



## Installation



**AVOID EYE  
DIRECT CONTACT!**

\*Laser effects projected 3 meters (9.8 ft) above the audience are eye safe. A survey should be taken to assess the likelihood of any reflective surfaces (such as high windows, chrome bars etc) bouncing stray beams back down into the audience.

\*Using a fastening clamps on the light and tight to the ceiling in a strong hook..

\*Make sure its correct power output and plug the power cable to the wall socket.

\* Power must be in earth! Power on the light.

\* Do not shoot the beams to the audience!

\*Do not look direct into the laser aperture once the laser light is ON. Please pay attention to the Laser Danger Warning Label!

## Caution

After setting up, and before public use, test laser to ensure proper function. Do not use if any defect is detected. Do not use if laser emits only one or two laser beams rather than dozens/ hundreds, as this could indicate damage to the diffraction grating optic, and could allow emission of higher laser levels above Class 3B.

**Do not** point lasers at people or animals. Never look into the laser aperture or laser beams.

**Do not** point lasers in areas in which people can potentially get exposed, such as uncontrolled balconies, etc.

**Do not** point lasers at highly reflective surfaces, such as windows, mirrors and shiny metal. Even laser reflections can be hazardous.

**Never** point a laser at aircraft, this is a federal offense.

**Never** point non-terminated laser beams into the sky.

**Do not** expose the output optic (aperture) to cleaning chemicals.

**Do not** use laser if the laser appears to be emitting only one or two beams.

**Do not** use the laser if the housing is damaged, the housing is open, or if the optics appear damaged in any way.

**Never** open the laser housing. The high laser power levels inside of the protective housing can start fires, burn skin and will cause instant eye injury.

**Never** leave this device running unattended.

*\*During Assembly, operation, maintenance, please pay special attention to avoid possible exposure to laser and collateral radiation in excess of the accessible emission limits.*

*\*Use of controls or adjustments or performance of procedures other than those specified herein may result in hazardous radiation exposure.*

*\*Protective eye wear is typically required where direct viewing of a Class 3B laser beam may occur.*



The projector must be installed in a location with adequate distance.



## Cleaning

**Fixture Cleaning:** Due to fog residue, smoke, and dust cleaning the internal and external lenses should be carried out periodically to optimize light output.

1. Use normal glass cleaner and a soft cloth to wipe down the out- side casing.
2. Clean the external optics with glass cleaner and a soft cloth every 20 days.
3. Always be sure to dry all parts completely before plugging the unit back in. Cleaning frequency depends on the environment in which the fixture operates (I.e. smoke, fog residue, dust, dew). In heavy use we recommend cleaning on a monthly basis. Periodic cleaning will ensure longevity, and crisp beam output.

## Technical Specification

Features:


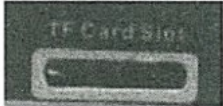
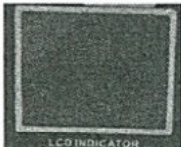



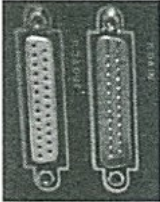





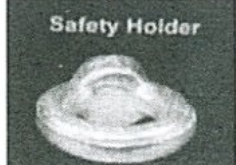
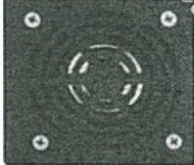
◆ **Feature:** Animation laser with high-speed optical scanner to create animated graphics, 256 beam show and graphics show patterns, and with the function of unique blanking, frequently flashing, rotating, movement, billowing, zoom (+/-), drawing and speed etc. SD/TF Card supports “.ild” format picture which shows customize animations. All functions are shown through LCD indicator. X and Y patterns can be adjusted separately. The scanning speed of the animations from SD/TF card can be set manually. Animations in SD/TF card can be selected and displayed permanently or replayed times.

◆ **Scanner:** High-speed optical scanner, big angle scanning (0 to 30° )

◆ **Play Mode (1) Laser:** Sound Active, AUTO-Beam, AUTO-Animation, DMX512 (CH6CH19/CH32), Master/ Slave (2) SD card

◆ **Power Supply:** Bi-Voltage 110V to 220V-250V, 50/60HZ, 50W

## Fixture Appearance

<b>Sound Active Microphone</b> 	<b>TF card slot</b> 	<b>LCD Indicator for functions</b> 	<b>Menu and Enter</b> 
<b>Red, green and blue laser brightness</b> 	<b>DMX or Linking Jack</b> 	<b>ILDA Interface</b> 	<b>ILDA Ethernet interface</b> 
<b>Power Coin 110V-240V AC</b> 	<b>Power switch ON/OFF for the whole light</b> 	<b>Remote Interlock ON/OFF for the whole light</b> 	<b>Key Switch on laser ON/OFF</b> 
<b>safety holder</b> 	<b>Cooling fans</b> 		



## SD Card Function

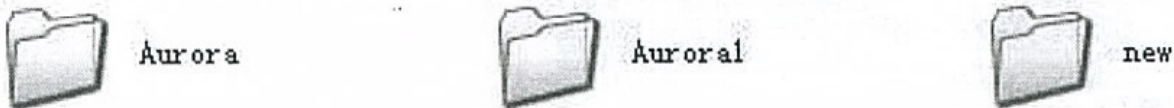
1. This program only support SD card with FAT32 format. If you buy new SD card, please reformat to FAT32 first.

How to format the new SD card:

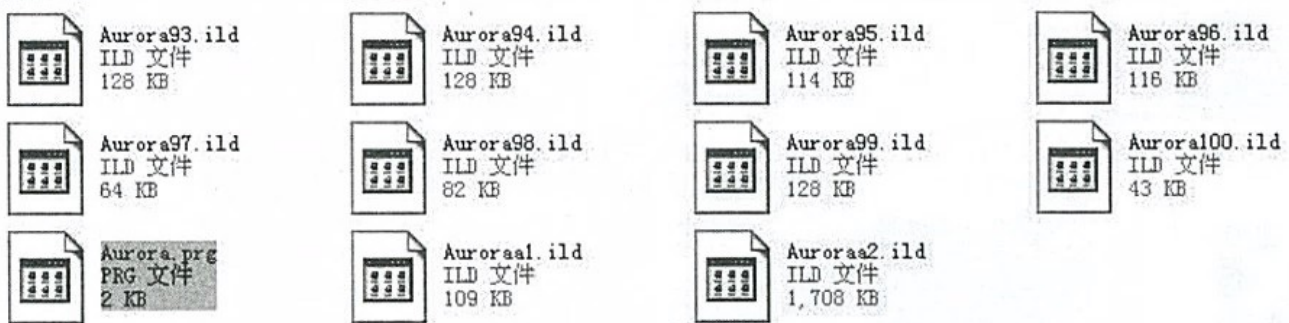
1. Plug your new SD card onto your computer
  2. Click the SD card file on the right mouse and select "Format"
  3. Select "FAT32" and start to format the SD card
2. File name is suggested to have less than 8 letters and 3 letters for the format name.
3. It is suggested to use the SD card only for the laser light. Please do not put other documents

into the SD card. This SD card can be put 100 folders and each folder can be put 256 files.

4. After you get our SD card, please plug it onto your computer. Then you will see 3 folders:



Open the first folder, you will see 102 ".ild" files and 1 ".prg" file



Double click the "Aurora.prg" file and select "Microsoft Office Word" to open this .prg file. You will see all the 102 files' name are listed on this "Aurora.prg" file. Every file is equal to one animation displayed in this laser.

Aurora97.ild, 10, 3

Aurora98.ild, 10, 2

Aurora99.ild, 10, 2

Auroraa1.ild, 10, 3

Auroraa2.ild, 5, 1

What does it mean on this file name? e.g.

Aurora3.ild, 18, 1

1. "Aurora3.ild" means the file name of your ilda animation

2. "18" means the displaying scanning speed

3. "1" means the displaying time: 1 time

5. How to make your own folder with your own animations?

(1). Use your own laser software to create ".ild" files. Your laser software must support export ".ild" file.

(2). Use our free laser software to create ".ild" files. Please send email if you need our free laser software.

Steps on how to create your own animations with our free laser software:

A. Install the software onto your computer

B. If you have a picture, such as "Disco" on your computer

# Disco

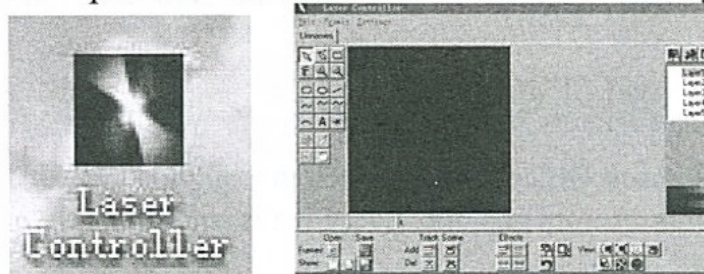
C. Open the Photoshop on your desk, and open the "Disco.jpeg" picture



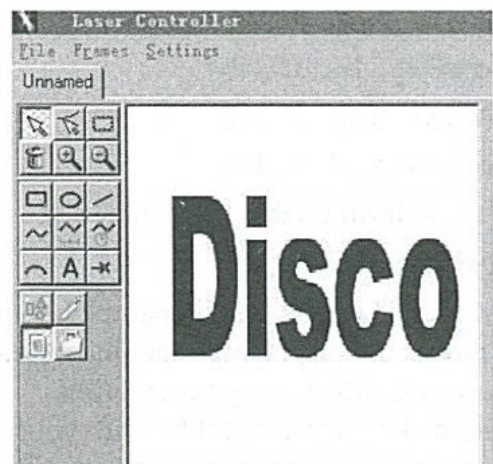
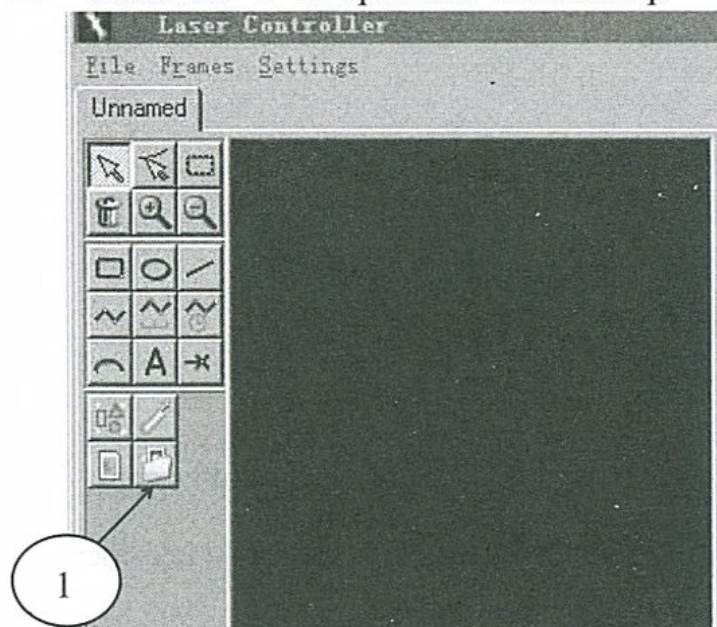
D. Save this "Disco.jpeg" picture to "Disco.bmp"



E. Open the "Laser Controller" software on your desk

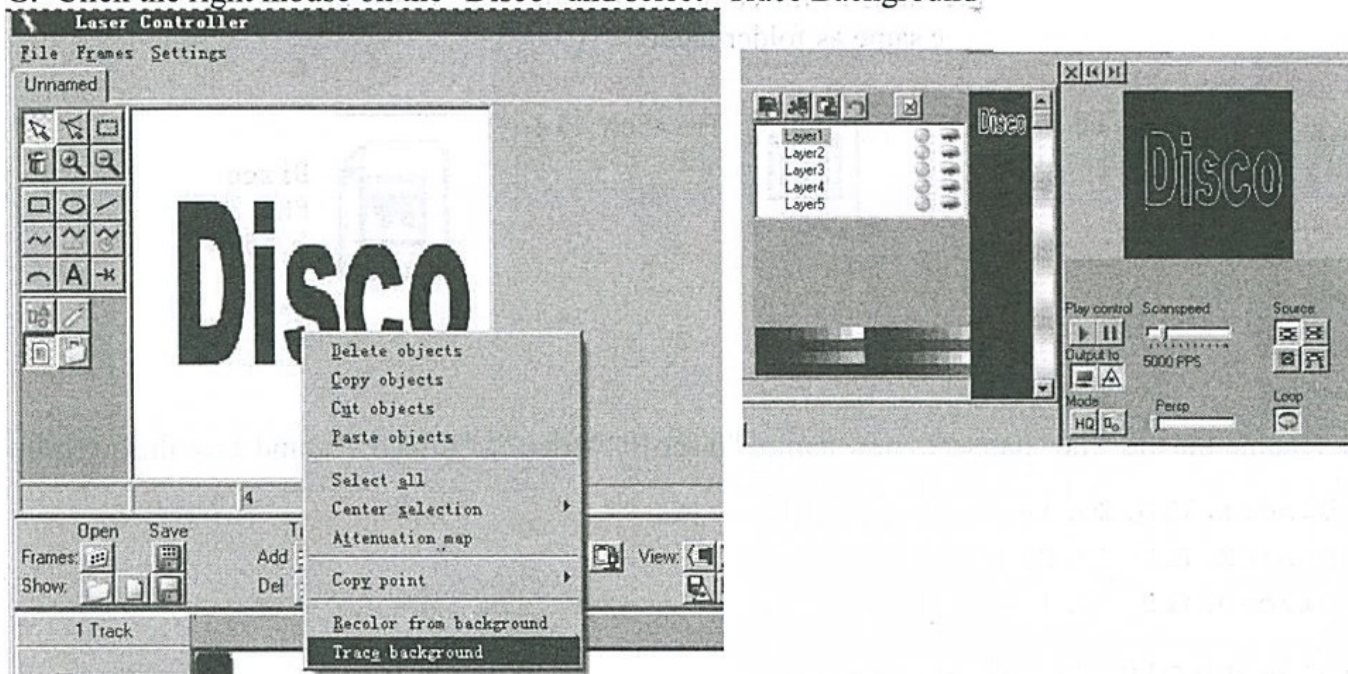


F. Click the "1" to open the "Disco.bmp"





G. Click the right mouse on the "Disco" and select "Trace Background"

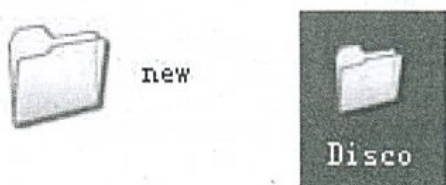


H. Click "Save" to "disco1.ild". The file type must be "256 colors"!



I. Please make other ".ild" files according to the "A-H" steps, such as "disco2.ild", "disco3.ild", etc.

(4). Copy the folder "New" from SD card onto your desk. Rename this folder to "Disco". Copy all the ".ild" files onto this folder, such as "disco1.ild", disco2.ild", "disco3.ild", etc.





- (5) . Rename the "new.prg" file name to "disco.prg". And open the "Disco.prg" file  
Important: Prg name must be the same as folder name!



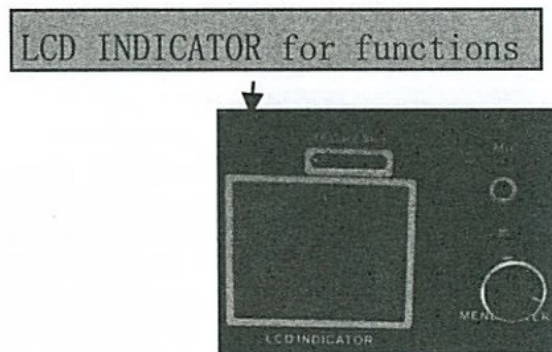
- (6). rename the old ".ild" names to new names "disco1", "disco2", "disco3"... , and save this prg file.

Disco1. ILD, 20, 1↵  
Disco2. ILD, 20, 30↵  
Disco3. ILD, 20, 1↵

- (7). Copy this folder "Disco" onto the SD card.

#### 6. How to operate the laser to display animations?

At the rear panel, you can see:



Scroll the MENU knob and select function, then press this knob to ENTER for confirmation.

NO.	Menu	Menu description	Settings	Setting description	Notes
1	DMX Address	DMX Address	1-512	DMX address value	
2	Show Mode	Play mode	ILD	ILD file one-by-one cyclically display	Automatically running the DMX mode when linking with the DMX512 controller
			PRG	Display the PRG list in order	
			Auto	AUTO mode	
			Sound	Sound mode	
3	Program	Select the programs in AUTO and Sound mode	progr0	Program 0	Programs 1-3 are waiting for the import from preset of DMX512 controller
			progr1	Program 1	
			progr2	Program 2	
			progr3	Program 3	
			progr4	Program 4	
4	SD FILE	SD card folders	Folder name	Current selected folder name	Only valid when displaying the SD card



NO.	Menu	Menu description	Settings	Setting description	Notes
5	Size	Graphics/Patterns size	10-100	Current pattern size percentage	
6	Phasic	Built-in patterns direction	X+ Y+	Phase of the built-in pattern	Only valid for the built-in pattern
7	Speed	Display speed	8-40	Built-in pattern running speed	According to the limited scanner speed setting
8	DMX State	No DMX signal state	Show	Display on the Show Mode	
			Black	Black out	
9	Slave Mode	Master/Slave setting	Slave	Slave	If no M/S linkin, then set into Slave.
			Master	Mater	
10	Y Phasic	Y direction	Positive	positive	Only valid for this light and outside ILDA signal
			Reverse	reverse	
11	X Phasic	X diction	Positive	positive	
			Reverse	reverse	
12	Color Mode	Color mode	RGB	Full colors	
			White	Single color	
13	Laser Lock	Laser ON/OFF lock	ON	ON	Laser is OFF when scanning angle is too small nearly single dot
			OFF	OFF	
14	Sound sense	Sound sensitivity	0-100	Sound sensitivity percentage	
15	SD Sound	Animations Sound ON/OFF	ON	ON	
			OFF	OFF	
16	Highlight	Highlight setting	0-100	Highlight percentage	Highlight in the mixed color point
17	ILDA Lock	ILDA lock	ON	Lock on the ILDA input signal	When using RJ45 Ethernet, select the Lock ILDA input
			OFF	No lock	
18	Load Flash	Loading FLASH	ON	Input the ILD program from the SD card	Loading the program from the <LOAD> in the SD card
			OFF		
19	Update Prog	Updating the built-in program/patterns	OFF	No updating	From show1.yuq-show4.yuq input the program/patterns
			progr1	Updating program 1	
			progr2	Updating program 2	
			progr3	Updating program 3	
			progr4	Updating program 4	
			all	Updating program 1-4	

## 7. DMX control:

DMX Control Parameter Chart

Channel	Function	Value	Description	Notes
1	Channel mode	0-49	Laser OFF	
		50-99	CH6 mode	Only for the built-in program
		100-159	CH19 mode	Display single animation
		150-255	CH32 mode	Display dual animations
CH6 mode				
2	Select program list	0-49	Program 1	
		50-99	Program 1	
		100-159	Program 1	
		150-199	Program 1	
		200-255	Program 1	
3	Select pattern list	0-255	Select patterns	
4	Color change	0-255	Color change setting	
5	Patterns Speed	0-5	Original speed	
		5-255	Slow to fast	
6	Sound ON/OFF	0-127	Sound OFF	AUTO
		128-255	Sound ON	Sound
CH18-32 Mode				
2	Select patterns	0-49	AUTO	
		50-99	Sound	
		100-149	PRG	
		150-199	ILD	
		200-255	Built-in Patterns	
3	Pattern selection	0-255	Each 2 values for one pattern	
4	Dots display	0-255		
5	Color	0-255	Color list	
6	Pattern X moving	0-255		
7	Pattern Y moving	0-255		
8	Pattern size	0-255		
9	Pattern X direction rotation	0-255		
10	Pattern Y direction rotation	0-255		
11	Pattern Z direction rotation	0-255		
12	Drawing	0-255		
13	X waving	0-255		
14	Y waving	0-255		
15	flashing	0-255		
16	Red brightness	0-255		
17	Green brightnes	0-255		
18	Blue brightness	0-255		



Channel	Function	Value	Description	Notes
19	Display effects	0-49	Rebound	
		50-99	Line	
		100-149	Blanking	
		150-255	To the opposite	
CH32 Mode				
20	Pattern selection	0-255	Each 2 values for one pattern	
21	Dots display	0-255		
22	Color	0-255	Color list	
23	Pattern X moving	0-255		
24	Pattern Y moving	0-255		
25	Pattern size	0-255		
26	Pattern X direction rotation	0-255		
27	Pattern Y direction rotation	0-255		
28	Pattern Z direction rotation	0-255		
29	Drawing	0-255		
30	X waving	0-255		
31	Y waving	0-255		
32	flashing	0-255		
	Red brightness	0-255		
	Green brightnes	0-255		
	Blue brightness	0-255		
	Display effects	0-49	Rebound	
		50-99	Line	
		100-149	Blanking	
		150-255	To the opposite	

#### Warranty Warnings:

1. Damages caused by the disregard of this user manual are not subject to Warranty.

The dealer will not accept liability for any resulting defects or problems.

2. Please consider that unauthorized modifications on the device are forbidden due to safety reasons. Please note that damages caused by manual modifications on the device or unauthorized operation by unqualified persons are not subject to warranty.

3. If this device will be operated in any way different to the one described in this manual, it may suffer damages and the guarantee becomes void. Furthermore, any other operation may lead to dangers like short-circuit, burns electric shock, etc.

After trying the above solution you still have a problem, please contact your dealer or our company for service.